



CORNHUSKER
Classic



39th Annual Steer Et Heifer Sale
THE FIRST OF NOVEMBER

7 PM • BUFFALO COUNTY FAIRGROUNDS • KEARNEY, NE

PRESENTED BY THE NEBRASKA HEREFORD ASSOCIATION

WELCOME to *Kearney*

SCHEDULE OF EVENTS

THURSDAY, OCTOBER 31

3:00-6:00 PM - CATTLE AVAILABLE FOR VIEWING

FRIDAY, NOVEMBER 1

10:00 AM - CATTLE AVAILABLE FOR VIEWING

5:00 PM - NHW "STEAKS FOR SCHOLARSHIPS" DINNER

7:00 PM - *39th Annual Cornhusker Classic Sale*

SATURDAY, NOVEMBER 2

9:00 AM - NCC FALL EDITION JUNIOR SHOW

Cornhusker Classic heifers are pre-entered.

4:00 PM - ANNUAL MEETING

Younes Conference Center North · 707 W Talmadge Street

6:00 PM - COCKTAIL HOUR

Younes Conference Center North · 707 W Talmadge Street

7:00 PM - NHA AWARDS BANQUET

Hereford Beef Dinner · Award Presentations · Hereford Frozen

Genetics Sale · 2025 Directory Premium Page Auction

2025 Husker Harvest Days Pen Auction · HWN Silent Auction

SUNDAY, NOVEMBER 3

9 AM - NCC FALL EDITION JUNIOR PROSPECT SHOW

Cornhusker Classic steers & heifers are pre-entered.

SAVE THE DATES

NOVEMBER 22, 2024

NHA HEREFORD INFLUENCE SALE - BURWELL, NE

FEBRUARY 15-23, 2025

NCC THE CLASSIC "WINTER EDITION" - KEARNEY, NE

JUNE 6-8, 2025

NEBRASKA STATE HEREFORD SHOW - LEXINGTON, NE

JULY 12-18, 2025

JUNIOR NATIONAL HEREFORD EXPO - LOUISVILLE, NE

On behalf of the Nebraska Hereford Association, it is with great excitement to welcome you back to Kearney for the 39th Annual Cornhusker Classic Sale. Hereford breeders from across the cornhusker state have come together to offer a set deep with quality from top to bottom of heifer and steer prospects.

The work has been done! Many individuals in the offering come with an established show career or are ready to kick it off this weekend here in Kearney. Buy on Friday and show in the same location over the weekend at the NCC "Fall Edition". Then, join us the first weekend of June in Lexington for a shot at the great 2024 Futurity Show payouts! This is an exclusive opportunity presented to junior buyers of the Cornhusker Classic Sale and NCC "Winter Edition". Tremendous opportunity comes at the end of each halter selling in Kearney!

We welcome you to view this offering at the fairgrounds beginning Thursday, October 31 and invite you to join us on Friday evening at 5pm for a Hereford beef dinner and social gathering before the sale begins at 7 p.m. If you are unable to attend in person, watch the sale and bid live online with CCI.live. Please reach out to any of the sale staff or breeders with any questions, see you in Kearney for an exciting weekend of events!

Enjoy the cattle,

The Cornhusker Classic Sale Committee

Trevor Toelle, Don Kracker, Raileen Peterson, & Brett Nelson

NHA
NEBRASKA HEREFORD ASSOCIATION

\$1,000 PAYOUT TO EACH *Champion*



2024 CHAMPION FUTURITY STEER

SOLD ON THE 2023 CORNHUSKER CLASSIC SALE
BRED BY: BAR M HEREFORDS
CONGRATULATIONS TO WESTON STEMICK



2024 CHAMPION FUTURITY HEIFER

SOLD ON THE 2024 NCC "THE CLASSIC" WINTER EDITION
BRED BY: SNELL SHOW CATTLE
CONGRATULATIONS TO KAELEE MINNICK

\$600 PAYOUT TO EACH

Reserve



2024 RESERVE CHAMPION FUTURITY STEER

SOLD ON THE 2024 NCC THE CLASSIC "WINTER EDITION"
BRED BY: KM CATTLE
CONGRATULATIONS TO BROOKE DAY



2024 RESERVE CHAMPION FUTURITY HEIFER

SOLD ON THE 2023 CORNHUSKER CLASSIC SALE
BRED BY: MOELLER FARMS
CONGRATULATIONS TO DEVON BENES

Sale INFORMATION

SALE LOCATION

Buffalo County Fairgrounds - Ag Pavilion
3807 Ave N · Kearney, NE 68847

SALE MANAGEMENT

NEBRASKA HEREFORD ASSOCIATION

Trevor Toelle, *President*, 308.214.1543
Grady McMahon, *Vice President*, 402.984.7620
Don Kracke, *Director*, 531.500.7788
Railen Peterson, *Director*, 308.440.4087
Brett Nelson, *Sale Representative*, 308.214.0334
Rudy Pooch, *NHA Manager*, 402.921.0573

AUCTIONEER

Matt Printz, 308.440.2918

RING SERVICE

Aaron Friedt, *American Hereford Association*, 701.590.9597
Randy Rasby, *Special Assignment*, 308.539.6195
Kristian Rennert, *Special Assignment*, 308.440.9463

ASSOCIATION REPRESENTATIVES

Jack Ward, *Executive Vice President*,
American Hereford Association
Shane Bedwell, *Chief Operating Officer*,
American Hereford Association
Kaygan Witthuhn, *Nebraska Hereford Queen*

ONLINE BIDDING + VIDEOS

View the sale from your phone, tablet, or desktop computer and bid with confidence! Visit www.CCI.live for complete sale information and online registration.



Bid Live Online

www.CCI.live - Watch the Sale

(405) 400-9505 Text/Call - schedule@cci.live
Find us on the App Store and Google Play
Over 35 years in livestock marketing!

LODGING

Crowne Plaza, Kearney, NE, 308.238.7000
Fairfield Inn & Suites, Kearney, NE, 308.236.4200
Holiday Inn, Kearney, NE, 308.237.5971
Days Inn & Suites, Kearney, NE, 308.708.745

\$500 SALE CREDIT GIVEAWAY

Registered, junior buyers who are present will be entered to win one of three, \$500 sale credits. Winners will be announced from the block at the beginning of the sale. Valid for 2024 Cornhusker Classic Sale.

FUTURITY SHOW ELIGIBILITY

All cattle purchased by juniors at the 2024 Cornhusker Classic Sale and 2025 NCC Winter Edition are exclusively eligible to enter the NHA Futurity Show held during the Nebraska State Hereford show, June 6-8 in Lexington, NE. Entry fee of \$25 must be completed upon purchase. Payout of \$1,000 to champion and \$600 to reserve.

NCC FALL EDITION

Buy and show in one location! All sale cattle are pre-entered for the show. For complete event details visit www.nebraskaclassic.org.

INSURANCE

Angie Huwaldt, *GTA Insurance Group*, 402.360.4796
Jensen Livestock Agency, 785.262.1116

TERMS + CONDITIONS

All cattle sell under the standard terms and conditions recommended by the American Hereford Association. Announcements made from the block will take precedence over statements in the catalog or other advertising. Any disputes or challenges regarding bidding will be settled by the auctioneer and his decision will be final. Terms of the sale are cash or good check payable immediately upon the conclusion of the sale and before the animals will be moved. Registration papers will be transferred upon completion of payment for purchases by the seller.

LIABILITY

All persons attending the sale do so at their own risk. All animals will be at the buyer's risk at the fall of the hammer. Neither the Nebraska Hereford Association, sale staff, sellers or affiliated personnel may be held responsible for any accidents that may occur.

Sale CONSIGNORS

DC HEREFORDS

ECKLEY, CO
Danny Calderwood
970.759.2270

LOTS 8

DD HEREFORDS

AURORA, NE
Devin Danielson
402.631.3416

LOTS 19 & 22

DIAMOND RING RANCH

TAYLOR, NE
Mike & Donna Steckel
Richard & Whitney Dover
Whitney: 308.214.1407

LOTS 15 & 20

FRENZEN POLLED HEREFORDS

FULLERTON, NE
Galen & Eric Fenzen
Galen: 308.550.0237
Eric: 308.550.0238

LOTS 5 & 21

HUWALDT'S HEREFORDS

RANDOLPH, NE
Ed, Marsha, & Angie
Huwaldt
Angie: 402.360.4796

LOTS 3 & 4

JMK CATTLE

WILBER, NE
Tim & Kelsie Warta
Tim: 402.821.7382
Kelsie: 402.821.7307

LOTS 9 & 11

JMK CATTLE

WILBER, NE
Kian Morris
402.821.8657

LOT 16

KELLER CATTLE COMPANY

ST. PAUL, NE
Jefferson Keller
308.750.2349

LOT 27

JUSTINE POPE

RAVENNA, NE
308.216.2534

LOT 1

KRACKE HEREFORDS

DEWITT, NE
Don & Jayne Kracke
Don: 531.500.7788

LOT 13, 23 & 29

MOELLER FAMILY FARMS

GRAND ISLAND, NE
William Moeller
308.850.4856

LOTS 6 & 10X

NELSON HEREFORDS

BURWELL, NE
Brett & John Nelson
Brett: 308.214.0334
John: 308.214.1272

LOTS 2, 12X, 26X

R&R CATTLE

FRANKLIN, NE
Railen & Josh Peterson
Ralston & Brock Braden
Railen: 308.440.4087
Ralston: 308.293.5560

LOT 28

RK CATTLE

KEARNEY, NE
Rhonda Kupke
308.293.0700

LOT 18

SCHUTTE & SONS

GUIDE ROCK, NE
Ronald & Nancy Schutte
Ron: 402.746.4378
Trent: 402.984.6072

LOT 14, 25

VALLEY CREEK RANCH

FAIRBURY, NE
Blake McGee
402.310.8881

LOT 7, 24

VALLEY CREEK RANCH

FAIRBURY, NE
Blair Buehler
402.239.9712

LOT 17

NHA
NEBRASKA HEREFORD ASSOCIATION

1 JRP YEAH GLO 358L ET

AHA 44584757 // DOB 10/14/23 // TATTOO 358L // BREED POLLED HEREFORD

HYALITE ON TARGET 936

CHAC MASON 2214

R LEADER 696 X RTK JRP MISS SWIRLAY 19D

R MISS REVOLUTION 1009 JC MISS ADVANCE 029

GED	BW	WW	YW	MILK	MCE	CW	REA	MARB	\$CHB
53	2.2	54	80	24	2.2	72	0.48	0.05	109

LOT 1 OFFERED BY JUSTINE POPE

Yeah Glo covers the basics and more and packages it all in a reasonable, moderate frame. We love her front-end assembly and the rib shape she offers. She would be a perfect fit for a little showman or a unique breeding piece for any operation down the road!



2 NH MARGARET 1M

AHA 44586807 // DOB 1/7/24 // TATTOO 1M // BREED POLLED HEREFORD

JDH VICTOR 719T 33Z ET

NH BN SENSATIONAL MOON 506

JDH AH LINCOLN 106H ET X NH DAHILA 003

AH MS 25L RUMBLER 19Z NH 38S DAHLIA CACTUS 821

LOT 2 OFFERED BY NELSON HEREFORDS

This heifer has the length of spine & structure to be shown deep into the show season as a bred. Not for a first-time showman.



3 AH N10 1534 MS SKY 434

AHA 44565700 // DOB 2/4/24 // TATTOO 434 // BREED POLLED HEREFORD

ST6 782B HIGHLAND 84E

KJ 482Y LEADER 873E ET

PYRAMID HIGHLAND 1534 X AH K2I 873E SKYS LEADER N10

FHF 632D ACHIEVA 146G AH 848 MS REVOLVER K2I

GED	BW	WW	YW	MILK	MCE	CW	REA	MARB	\$CHB
2.2	3.3	62	97	29	2	72	0.27	-0.03	102

LOT 3 OFFERED BY HUWALDT'S HEREFORDS

Sky has her mother's great personality and is ready for a beginner. She comes from a line of excellent females from the matriarch of Angie's herd. Her cherry red color and pigment will grab attention. GE-EPDs.



4 HH J107 L41 MILLIE 452

ANA 44565718 // DOB 2/13/24 // TATTOO 452 // BREED POLLED HEREFORD

C DOUBLE YOUR MILES 6077 ET

NJW 5M 38W BEEF 65Y ET

HH J45 RIGHT DOUBLE MILES L41 X HH MS BEEF J107

HH MS RIGHT TIME J45

HH MS HUNTER D44

CED	BW	WW	YW	MILK	MCE	CW	REA	MARB	\$CHB
-3.9	5.5	53	94	26	-1.7	64	0.41	-0.03	103

LOT 4 OFFERED BY HUWALDT'S HEREFORDS

You just can't miss Millie! She is feminine, soft on the move, and going to have great hair! She's green yet but will grab your attention. Her paternal sib was a many time winner for the Stemick boys. Check out her video at www.edhuwaldt.com.



5 FRENZEN LADY M14

ANA 44597612 // DOB 2/18/24 // TATTOO M14 // BREED POLLED HEREFORD

CHURCHILL ROUGH RIDER 719E

PYRAMID DAYBREAK 9165

CHURCHILL ROUGHNECK 0280H ET X FRENZEN LADY K14 ET

CHURCHILL W4 LADY 770E

FRENZEN LADY S38 (\$38) P42752841

CED	BW	WW	YW	MILK	MCE	CW	REA	MARB	\$CHB
8.8	-0.6	54	86	31	7.6	72	0.51	0.19	126

LOT 5 OFFERED BY FRENZEN POLLED HEREFORDS

A very complete Polled heifer with a pedigree and EPD profile that allows provides mating flexibility to move the breed forward. Out of a moderate framed, awesome uddered first calf heifer who is also a maternal sister to Frenzen Bar JZ Bruiser B30.



CHURCHILL ROUGHNECK 0280H ET
Sire of Lot 5



FRENZEN BAR JZ BRUISER B30
Maternal Sib to Dam of Lot 5

6 MOE MISS SWEET DIVINE 13M

ANA 44596212 // DOB 2/18/24 // TATTOO 13M // BREED POLLED HEREFORD

EFBEEF RESOLUTE CED

R LEADER 6964

H WMS THOMAS COUNTY 1443 ET X MISS DIVINE 864F

H MS EXCEL 7945 ET

KJ BJ 339A LADY DIVINE 744D ET

CED	BW	WW	YW	MILK	MCE	CW	REA	MARB	\$CHB
2.6	3.1	71	111	28	-3.5	85	0.65	0.15	128

LOT 6 OFFERED BY MOELLER FAMILY FARMS

This February heifer sired by Thomas County has longevity written all over her. She so attractive through her a head and neck with a great set of running gears. One you're going to want to see in person.



7 VCR 9985 HARLOW 432M

AHA 44598052 // DOB 2/25/24 // TATTOO VCR432M // BREED POLLED HEREFORD

NJW 79Z Z311 ENDURE 173D ET

C ETF WILDCAT 4248 ET

UPS HARVESTOR 9985 X VCR 4282 MOSCATO 718E

UPS MISS SENSATION 2895

VCR 724 JORI 128Y

CE	BW	WW	YW	MILK	MCE	CW	REA	MARB	\$CHB
4.6	2.9	61	96	37	2.7	84	0.98	-0.02	129

LOT 7 OFFERED BY VALLEY CREEK RANCH

You won't see very many Harvester heifers sell this fall because they are making awesome cows, and it's hard to let one go! But we wanted to bring some of our best to town, so it's opportunity time! Harlow goes back to one of our most prolific cow families that's been in the VCR herd for over 25 years, and her mother is an outstanding producer, so this is the first daughter we have ever offered out of her. 432M is gentle and has all of the right lines and pieces to make a nice show heifer and front pasture kind of cow in the future! Kids getting started showing, this one should be on your list to look at!



8 DC 743 039 MOSCATO 5M ET

AHA 44580012 // DOB 3/1/24 // TATTOO 5M // BREED HORNED HEREFORD

THM DURANGO 4037

MSU TCF REVOLUTION 4R

CPR ABOUT TIME 743 X R SWEET RED WINE 039

CRR D03 CASSIE 206

R MISS WRANGLER 207

CE	BW	WW	YW	MILK	MCE	CW	REA	MARB	\$CHB
5	-0.1	48	75	19	-0.5	60	0.5	0.06	97

LOT 8 OFFERED BY DC HEREFORDS

Old school cool here! This heifer is the product of one of the most proven matings in the breed and a full sister was Denver champion. Moscato is no different as she is so smooth and pleasing the eye. No doubt she is a power female with a huge hip and ultra-wide pin set with the foot and bone to match. Where she excels is when she gets on the go on a near flawless running gear. We ended up with 2 full sisters so we are offering up the better one.



CHEZ STRAWBERRY WINE ET 204Z
Full sister to Lot 8 & 11

9 JMK 702 MCKEE QUEEN 42M ET

AHA 44597229 // DOB 3/6/24 // TATTOO 42M // BREED HORNED HEREFORD

NJW 98S R117 RIBEYE 88X ET

BR NITRO AVENTUS 3116 ET

C MILES MCKEE 2103 ET X OCC FLAWLESS QUEEN ET

C NOTICE ME ET

TCC MS DIANA 01

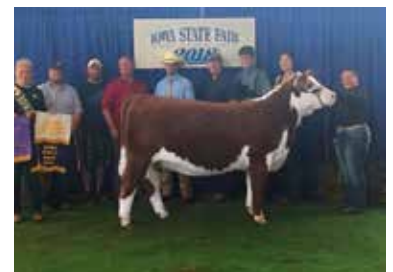
CE	BW	WW	YW	MILK	MCE	CW	REA	MARB	\$CHB
1.9	4.1	53	82	31	0.2	69	0.58	0.11	125

LOT 9 OFFERED BY JMK CATTLE

This McKee heifer is out of Flawless Queen, who is one of the few top direct daughters of TCC Diana 01 in the country. She is packed with look, presence, power and body, with a unique pedigree to breed them to virtually anything!



C MILES MCKEE 2103 ET
Sire of Lot 9



OCC FLAWLESS QUEEN ET
Dam of Lot 9

10X MOE MISS ICON 34M

AHA 44605366 // DOB 3/8/24 // TATTOO 34M // BREED POLLED HEREFORD

EFBEEF RESOLUTE CEO

H MONTGOMERY 7437

H WMS THOMAS COUNTY 1443 ET X MISS ICON 2J ET

H MS EXCEL 7945 ET

CF LADY SENTRY 1D ET

CEO	BW	WW	YW	MILK	MCE	CW	REA	MARB	\$CHB
3.8	3	68	112	32	-0.6	89	0.77	0.24	144

LOT 10X OFFERED BY MOELLER FAMILY FARMS

This heifer came in a little greener but keeps getting better every day! Way good looking, very good at the ground, and still got plenty of power at this point in her maturity. Watching her develop will be exciting.

11 JMK 039 SWEET WINE TIME 41M ET

AHA 44562087 // DOB 3/20/24 // TATTOO 41M // BREED HORNED HEREFORD

THM DURANGO 4037

MSU TCF REVOLUTION 4R

CRR ABOUT TIME 743 X R SWEET RED WINE 039

CRR D03 CASSIE 206

R MISS WRANGLER 207

CEO	BW	WW	YW	MILK	MCE	CW	REA	MARB	\$CHB
3.9	1.7	50	75	22	0.8	66	0.5	0.05	102

LOT 11 OFFERED BY JMK CATTLE

This About Time daughter is bold sprung with plenty of muscle shape, style, and balance. She is structurally correct with big feet and travels extremely well. She is a full sib to CHEZ Strawberry Wine ET 204Z.

12X NH BN 105 MISS EXPEDITION 27M

AHA 44596439 // DOB 3/29/24 // TATTOO 27M // BREED POLLED HEREFORD

SR EXPEDITION 619G ET

HARVIE 40Y WINSTON 252C

DVOR 619G 934 EXPEDITION 1154J X NH BN 510 MISS WINSTON 105

DVOR 273 5819 LADY SANDI 934G

NH BR MONA LISA 510

CEO	BW	WW	YW	MILK	MCE	CW	REA	MARB	\$CHB
1.7	3.1	62	101	31	4.7	66	0.37	0.09	107

LOT 12X OFFERED BY NELSON HEREFORDS

This heifer is a very attractive heifer that you really fall in love with when she's on the move. She ties it all together with a super cool front end in a very stylish package. The expedition calves are flat out awesome! She is puppy dog, gentle.



Watch the Sale

"Broadcasting Live" on CCI.live!

www.CCI.live - Live Online Bidding

(405) 400-9505 Text/Call - schedule@cci.live

Find us on the App Store and Google Play

Over 35 years in livestock marketing!



CRR ABOUT TIME 743
Sire of Lot 8 & 11



R SWEET RED WINE 039
Dam of Lot 8 & 11





13 DJ MISS ENDURE 451

AHA 44570659 // DOB 3/29/24 // TATTOO 451 // BREED POLLED HERFORD

NJW 79Z Z311 ENDURE 173D ET

UPS FULL THROTTLE 5430 ET

UPS ENDURE 9359 ET X DJ MISS FULL THROTTLE 004

UPS MISS SENSATION 2277 ET

DJ MISS ABOUT TIME 422

CED	BW	WW	YW	MILK	MCE	CW	REA	MARB	\$CHB
-1	53	65	106	25	0.3	94	0.87	0.14	153

LOT 13 OFFERED BY KRACKE HEREFORDS

DJ Miss Endure 451 is a stylish heifer with a great muscle pattern. She will be deep just as her full brother was this year as he was Reserve Overall Champion Steer at the Gage County Fair. This heifer is an eye catcher with a strong bloodline for genetic consistency. This is her dam's third calf and they have all been special calves.

15 WS SULTANA 438

AHA 44595831 // DOB 4/10/24 // TATTOO 438 // BREED HORNED HERFORD

/S MANDATE 66589 ET

UPS SENSATION 2296 ET

NJW 79Z 6589 TOOLBOX 220G ET X WS SULTANA 0203 ET

BW 91H 100W RITA 79Z ET

H WR LADY OUTCROSS 2079 ET

CED	BW	WW	YW	MILK	MCE	CW	REA	MARB	\$CHB
5.4	1.7	63	105	29	-0.5	74	0.66	0.09	119

LOT 15 OFFERED BY DIAMOND RING RANCH

WS Sultana 438 is the type that's built correct from the ground up and will only get better with age. A really nice younger horned female out of one of our favorite cow families. Her two-year-old full sister has been impressive in production. This cow line has produced the Supreme Champion Female at the Nebraska Cattlemen's Classic, state show champions, and Nebraska State Fair champions. While they have had success in the ring, we like them even better in production.



BEHM 100W CUDA 504C
Grandsire of Lot 14

14 S&S MISS ROYAL 160M

AHA 44551413 // DOB 4/5/24 // TATTOO 160M // BREED POLLED HERFORD

BEHM 100W CUDA 504C

AH RAMBLE ON 619D

S&S CUDA 17K X S&S MISS ROYAL 851K

S&S PATTY 675H

S&S MISS ROYAL 658G

CED	BW	WW	YW	MILK	MCE	CW	REA	MARB	\$CHB
4.5	2	63	99	32	0.6	2	0.59	0.27	143

LOT 14 OFFERED BY SCHUTTE & SONS POLLED HERFORDS

An attractive, soft made heifer that was raised on a first calf heifer until mid-September. She is fully pigment and dark red. With three superior "Dams of Distinction" in her pedigree, S&S Miss Royal 160M will make a foundation female in any junior member's herd.





GREEN JCS MAKERS MARK 229G ET
Grandsire of Lot 16 & Sire of Lot 17

16 JMK 71E MAKERS LIVIA 47M

AHA 44597228 // DOB 4/24/24 // TATTOO 47M // BREED POLLED HEREFORD

GREEN JCS MAKERS MARK 229G ET X KCF BENNETT INFLUENCE Z80

LAND MAKERS MARK 2039ET X JMK LUCY 71E

TH 96A Z303 MISS DOM 302D WTK ANL 80S LIBBY 122X

CED	BW	WW	YW	MILK	MCE	CW	REA	MARB	\$CHB
3.3	3	55	92	19	0.7	63	0.46	0.15	114

LOT 16 OFFERED BY KIAN MORRIS, JMK CATTLE

Livia is out of the 2018 champion futurity heifer, JMK LUCY 71E. She is moderate in her frame, bold bodied, and square built from the ground up. A surefire producer that deserves serious consideration on sale day!

18 RK ABIGAIL 4M

AHA 44582861 // DOB 2/26/24 // TATTOO 4M // BREED POLLED HEREFORD

JCS ICON 4641 H FHF ADVANCE 628 ET

EXR PLATINUM 9200 ET X RK AVERY 3H

LJR MSU WHITNEY 134Z BL MISS SPICE 404 ET

CED	BW	WW	YW	MILK	MCE	CW	REA	MARB	\$CHB
-0.2	4.2	58	91	23	-1.4	63	0.5	-0.02	100

LOT 18 OFFERED BY RK CATTLE

This Platinum heifer has the look you want - dark red and soft bodied. Abigail is great necked and big boned but still keeps her femininity. She will make a nice show heifer but a great addition to your cow herd.



17 VCR 229G MERLOT 412M

AHA 44582910 // DOB 2/08/2024 // TATTOO VCR412M // BREED POLLED HEREFORD

BOYD 31Z BLUEPRINT 6153 NJW 73S W18 HOMEGROWN 8Y ET

GREEN JCS MAKERS MARK 229G ET X VCR 8Y MERLOT 126J

JDH AH MERCEDES 11E ET VCR RH 236Z MERLOT 723E

CED	BW	WW	YW	MILK	MCE	CW	REA	MARB	\$CHB
11.1	-0.4	50	82	34	7.8	80	0.59	0.11	135

LOT 17 OFFERED BY BLAIR BUEHLER, VALLEY CREEK RANCH

This one has been a standout since she was born, and it was hard to convince Blair into selling a bred and owned heifer, but she finally gave in. If you are looking for one that will compete in the futurity, and then turn around and make the donor pen, look no further. She's short marked, sound as a cat, robust in her center body but sleek through her front end. Matt Copeland told me this summer that these Maker's Marks just keep getting better every day, so think how good she will look next summer!



EXR PLATINUM 9200 ET
Sire of Lot 18

19 DCD MONTI 907

AHA 44564289 // DOB 3/10/24 // TATTOO 105 // BREED POLLED HEREFORD

H MONTGOMERY 7437 ET

BAR M FULL THROTTLE 816

DCD MONTGOMERY 907 ET



DCD SUGER LADY 2188

EF MONA CHEVELLE 907 3907

SUGAR LADY 88

LOT 19 OFFERED BY DD HEREFORDS

The Montgomery claves continue to surpass all expectations! Monti 907 is the type of calf that is going to make once in a lifetime kind of memories, or light a fire in a young exhibitor to want to get to the barn every chance they get. He has all the extra pieces it takes to get noticed these days, the freaky front, loaded with bone and foot size. His extra width and dimension will leave any showman in the running for the backdrop.



20 DR SNOOP 420

AHA 44595832 // DOB 3/10/24 // TATTOO 420 // BREED HORNED HEREFORD

UPS SENSATION 2296 ET

NJW 79Z 22Z MIGHTY 49C ET

WS OUTLANDER 0201 ET



DR TORI 713

H WR LADY OUTCROSS 2079 ET

A/S TORI 201

LOT 20 OFFERED BY DIAMOND RING RANCH

Powerhouse! Snoop is one of the stoutest steers we have ever offered. Big backed, stout hipped, and tons of natural muscle shape. Where I really appreciate him is how he carries the power on a flexible skeleton. I really like him and dad wishes he wouldn't have let me cut him.



21 FRENZEN MATEO M55 ET

AHA 44597657 // DOB 3/19/24 // TATTOO M55 // BREED POLLED HEREFORD

RST 5051 SMALL TOWN KID 9023

KCF BENNETT ENCORE Z311 ET

RST UNIQUE 1030



FRENZEN LADY QUEEN D03

RST MS 704 SENSATION 9034

FRENZEN LADY QUEEN 807

LOT 21 OFFERED BY FRENZEN POLLED HEREFORDS

A uniquely designed son of the Thomas and Perez sire Unique out of Kiera's very first show heifer. Giraffe necked, long spine, and square hipped with that show steer hind leg. Maternal sister won her division in the Bred and Owned division at the state show this past June.



RST UNIQUE 1030
Sire of Lot 21



FRENZEN LADY QUEEN L16S ET
Maternal Sister to Lot 21

22 DCD BUSTER 907

AHA 44564296 // DOB 3/28/24 // TATTOO 53 // BREED POLLED HEREFORD

H MONTGOMERY 7437 ET

KJ NELLA 919E LEADER 476G

DCD MONTGOMERY 907 ET X S&S INAS MIXER 796J

EF MONA CHEVELLE 907 3907

S&S INAS MIXER 577F

LOT 22 OFFERED BY DD HEREFORDS

Young showmen, take ahold of this opportunity! Buster 907 is a tame, square made steer with an awesome neck and head. He has the balance and look that every good feeding steer has.



H MONTGOMERY 7437 ET
Grandsire of Lot 19 & 22

23 DJ ENDURE 452

AHA 44570658 // DOB 3/30/24 // TATTOO 452 // BREED POLLED HEREFORD

NJW 79Z Z311 ENDURE 173D

PERKS 003 EASY MONEY 4003

UPS ENDURE 9359 ET X DJ MISS EASY MONEY 995T

UPS MISS SENSATION 2277 ET

DJ MISS FULL THROTTLE 715

LOT 23 OFFERED BY KRACKE HEREFORDS

This is a young steer that will have depth and power when he matures. His full brother was super deep, big topped and wide from the rear. All of the Endure 9359 calves are later maturing and really come on with power as they grow. He is very gentle and a great steer for all ages.



24 VCR 29H HOMER 453M

AHA 44597337 // DOB 3/30/24 // TATTOO VCR453M // BREED POLLED HEREFORD

NJW 79Z Z311 ENDURE 173D ET

UPS SENSATION 2504 ET

VCR 173D HOMBRE 29H X VCR 2504 AMELIA 861F

VCR 236Z UMA 509C

VCR 743 WHAT ABOUT RUBY 229Z

LOT 24 OFFERED BY VALLEY CREEK RANCH

This Hombre calf is going to be little kid deluxe, hairy, ample boned, stout, and so easy to feed even an amateur feeder couldn't mess him up. He just got weaned at the end of September, so he's had a lot of changes with getting cut, broke and adapting to show feed, and he has taken it all in stride. He will be fun to clip on and show this season!



25 S&S RAMBLE 52M

AHA 44551293 // DOB 4/9/24 // TATTOO 52M // BREED POLLED HEREFORD

AH RAMBLE ON 619D

CHURCHILL STUD 3134A

S&S RAMBLE ON 42K



S&S LADY LAMP 630G

S&S INAS MIXER 166B

S&S LADY LAMP 198B

LOT 25 OFFERED BY SCHUTTE & SONS POLLED HEREFORDS

This steer is made for the show ring! He is stout and wide based. Ramble moves smooth covering his tracks while also staying up-headed and even in his shoulders through his pins. Just to make the deal even sweeter, he is an easy feeder and has workable hair.



AH RAMBLE ON 619D
Grandsire of Lot 25

26X NH BN 1154 EXCELS 79M

AHA 44596443 // DOB 4/18/24 // TATTOO 79M // BREED HORNED HEREFORD

SR EXPEDITION 619G ET

H EXCEL 8051 ET

DVOR 619G 934 EXPEDITION 1154J



NH BN 8051 MISS EXCEL 724 ET

DVOR 273 5819 LADY SANDI 934G

FIVE H 5B PUREGOLD TOOTSIE T3

LOT 26X OFFERED BY NELSON HEREFORDS

This is a very stout made Steer with a lot of shape and dimension. He is a very thick made from end to end, especially for a young April baby. These expedition calves are flat out studs! He is puppy dog, gentle.



27 KELR SANCHO 419

AHA 44599829 // DOB 4/14/24 // TATTOO 419 // BREED POLLED HEREFORD

H FHF ADVANCE 628 ET

WCC 1101 RIBEYE 409

ECR 628 IVY'S ADVANCE 8923 ET



WCC 630A SIMONE 1614

ECR MISS SENSATION 4406 ET

BIG-GULLY 47R PARIS 630A

LOT 27 OFFERED BY KELLER CATTLE

A 3/4 brother to our Div. 1 Champion Steer at the 2024 JNHE. This calf reminds me an awful lot of his brother at this age. Awesome structured, great balance, and a calf that will feed. He comes with the advantage of a longer, more attractive front end than his brother.



2024 JNHE CHAMPION DIVISION I STEER
3/4 Brother to Lot 27

28 RRR MAVERICK 14M

AHA 44597227 // DOB 4/15/24 // TATTOO 14M // BREED POLLED HEREFORD

CHEZ DIVERGENT 505C ET

UPS SENSATION 2296 ET

RRR MR DIVERGENT 305G X KELR WHYNOT 014

RR MISS ARIEL 305

WCC CC 1009 WHYNOT 219 ET

LOT 28 OFFERED BY R&R CATTLE

Ralston and I always made sure to have a good Hereford steer in the barn every year, and Maverick is just that! Stout, sound, and good looking, plus he has great hair. Reach out to us for pictures and videos.



29 DJ ENDURE 454

AHA 44570605 // DOB 4/26/24 // TATTOO 454 // BREED HORNED HEREFORD

NJW 79Z Z311 ENDURE 173D

UPS SENSATION 2296 ET

UPS ENDURE 9359 ET X DJ MISS SENSATION 016ET

UPS MISS SENSATION 2277 ET

UPS MISS HOMETOWN 4215 ET

LOT 29 OFFERED BY KRACKE HEREFORDS

This calf has a great deal of potential as he matures. He is young and stout and moves with grace. His full brother made the final drive in the owned steer show this year at the State Hereford show. We think this one is better than his brother. His mother is a UPS Sensation 2296 daughter and is consistent in producing fancy calves. He is super gentle.



Thank You

NHA

NEBRASKA HEREFORD ASSOCIATION
PO BOX 782
TECUMSEH, NE 68450



NEBRASKAHEREFORDS.COM